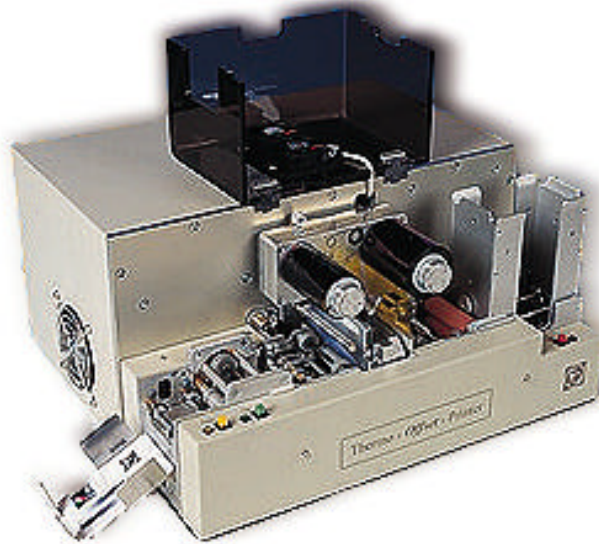


Operation Manual

Printer Driver Windows™ NT 4.0

Version: 1.3

TOP



State: April 1999

Table of Contents

1. Introduction.....	2
2. System Requirements.....	2
3. Installing the Windows™ - NT Printer Driver.....	3
4. Setting Up the Windows™ – NT Driver.....	3
4.1 Printer Properties- Device Settings.....	3
4.2 Advanced Settings.....	5

1. Introduction



The **TOP** (Ill. 1) can be used with Windows™ - NT 4.0 application software. Before you are printing, set in your application the **TOP** printer. For this you only have to install the software, which called „Printer Driver“. After installing the printer driver please keep the diskette in a safe place.

Note: This version supports the Centronics – Interface only.

Ill. 1

2. System Requirements

The **TOP** printer driver is running under the following conditions:

- Windows™ NT 4.0
- Pentium or higher, min. 32 MB RAM



3. Installing the WindowsTM - NT Printer Driver



1. Start Microsoft WindowsTM NT.
2. Select the button Settings.
3. Select the button Printers.
4. Double click on the ADD PRINTERS >> .
Select the button File OPEN.
5. Select the My Computer and button NEXT.
6. Set the port (normally LPT1) and the button Next.
7. Select the button HAVE A DISK.
8. Insert the TOP - printer driver disk into your disk drive.
9. Enter the name of the disk drive (i.e.: A:\)
Select the OK button.
10. Then appears T.O.P. Color Printer NT 4.0
Select the Next button.
11. Keep existing driver and select Next.
12. After T.O.P. Color Printer NT 4.0 appears on the display set No and select the NEXT button.
13. Select No shared and the button Next.
14. Select Test Page No the button Finish.
15. Now the files copying into the printer folder.

III. 2

4. Setting Up the WindowsTM – NT Driver

4.1 Printer Properties- Device Settings



Select the Device Settings button in the T.O.P. Color Printer NT 4.0 Properties (III. 2).
You can set the following characteristics:

Installable Options

Flip Over
Magnetic Encoder
Ribbon Type

Flip-Over (III. 5)

Set for printing both sides of the card.

Magnetic Encoder (III. 5)

This option require a magnetic head in the printer.

III. 3





Ribbon Types (Ill. 4)

There are different types of ribbons.
 YMCKO
 YMCO
 YMC
 KO and
 K

Note: After you have changed the ribbon type is going on once the ribbon synchronisation, when you print the first card with the new ribbon type.

See also in the operation manual of the TOP.

Ill. 4



Ill. 5



Ill. 6

Selecting **About T.O.P. Color Printer** from Ill. 3, the result is showing in the Ill. 6. Here you find the addresses and the e-mail address.



4.2 Advanced Settings



These setting are from your application

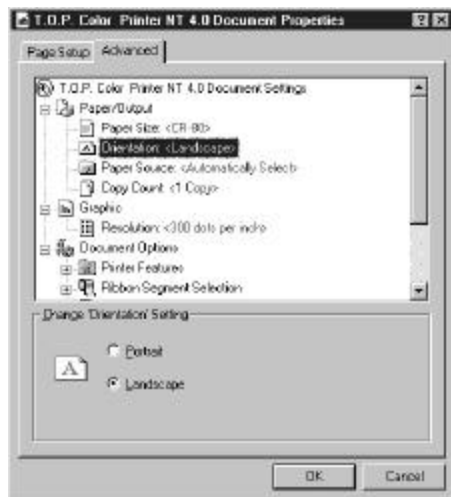
Paper Output
Graphic
Document Options

Paper Output

Paper Size
 According to the ISO 7810 (54 x 85 mm)

Orientation
 You can print in the Portrait- or the Landscape-Mode.
 Sometimes the format is pre-set from the application.
Note: Also the format can be set in the application.

III. 7



Paper Source
 Automatically Select

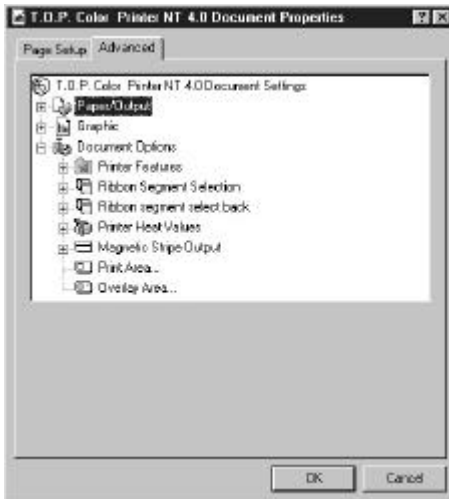
Copy Count
 Quantities of copies.
Note: In some applications you can set the quantity there.

Graphic

Resolution
 This parameter is set to 300 dpi.

III. 8

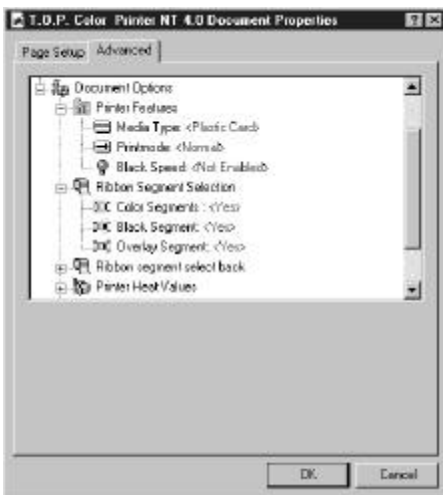




Document Options

- Printer Features
- Ribbon Panels (Front Side)
- Ribbon Panels (Back Side)
- Printer Head Values
- Magnetic Stripe
- Print Area
- Overlay Area

III. 9



Printer Features

Media Type

Default value is Plastic Card

Printmode

- **Normal**

Only print on the front side.

- **ECO**

Prints on the front side YMCO and on the back side K. With one YMCKO-segment you can print both sides of a card (Resin black only on the back side).

- **Both Sides**

Prints on both sides.

Note: Set in the Printer Properties – Device settings the flip-over options.

Black Speed

- **Not Enabled**

Standard print speed: 20 mm/sec

- **Enabled**

Print Speed: 40 mm/sec

Note: For printing text use – enable

III. 10

Ribbon Panel (Front Side)

You can select the necessary panels for the **front** side of your card. You have the choice to select:

- **Color Segments (YMC)**
- **Black Segment (K)**
- **Overlay Segment (O)**

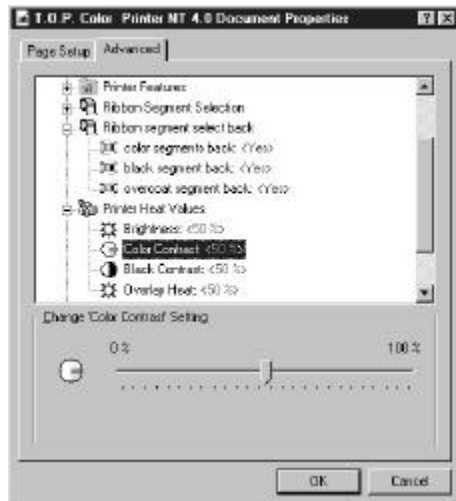
Ribbon Panel (Back Side)

You can select the necessary panels for the **back** side of your card. You have the choice to select:

- **Color Segments (YMC)**
- **Black Segment (K)**
- **Overlay Segment (O)**

Note: In the Printer Properties –Device Settings select the flip-over option. And check your ribbon type.





III. 11

Printer Heat Values

After selecting the buttons Printer Heat Values you see the III. 11. By changing the parameters Brightness, Color Contrast, Black Contrast and Overlay Heat you are changing the color on the card and the print quality.

Note: Increase Brightness - lighter printing.

Note: Increase the Color Contrast - more color contrast at the printed card.

Black Contrast—for the resin black panel.

Note: Be careful to increase the contrast, because it stress the thermalhead. Also increase the printing speed for the black panel.

Note: Increasing the Black Contrast will result in a more contrasting black on the card.

Overlay Heat—for the overlay quality.

Note: The overlay heat should be set accurate, because here you can see the printing quality.

Magnetic Stripe

Magnetic Encoder Options

Set one of the following options:

- **Read/Write**

Code the magstripe and verify the data on the stripe

- **Read only**

Read only the data from the magstripe

- **None**

No activities with the magnetic stripe.

Note: Set the magnetic stripe options in the Printer Properties –Device Settings.

Track One

Set the characters for this track according the ISO 7811 standard (alphanumeric, max. 37 characters.

Track Two

Set the characters for this track according the ISO 7811 standard (numeric, max. 76 characters.



III. 12

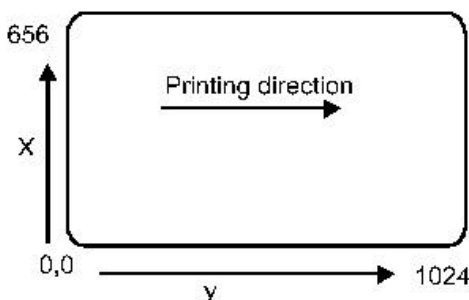
Track Three

Set the characters for this track according the ISO 7811 standard (numeric, max. 104 characters.

Print Areas

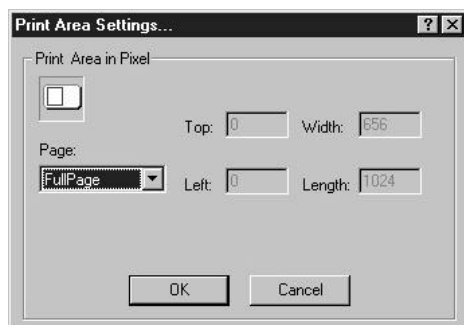
For customised applications some times it is necessary to define the printing area (standard: full). By this way it is possible to increase the print performance. Please see the following drawing, how to set the parameters (1 mm =12 pixel).

Note: These 1024 x 656 are for the full bleed printing. For safety is use only a printing area 1020 x 648 pixels.



III. 13

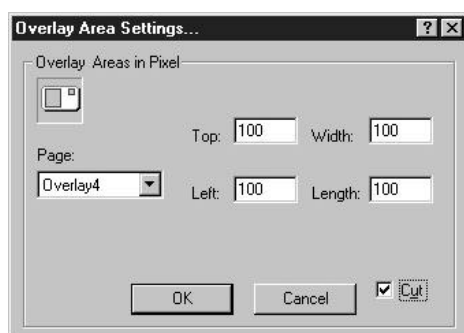




III. 14

Overlay Areas

You can set up to four overlay-segments (set or **Cut**). See the drawing, how to set these parameters (1 mm =12 pixel). In case the Cut area is in grey ton background, the cutting function is deactivated.



III. 15

Windows is a trademark of the Microsoft Corporation.

